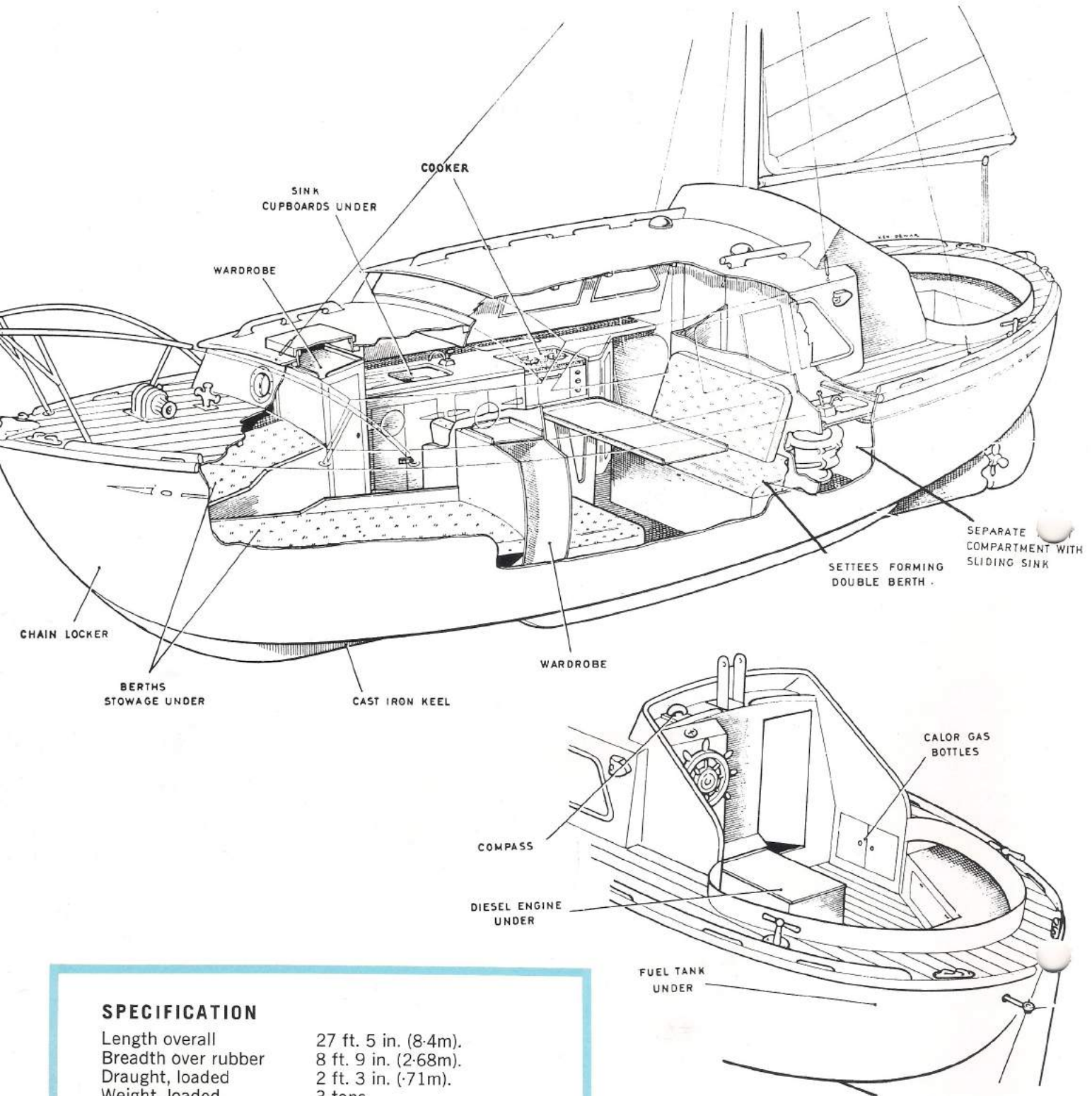




**FISHERMAN 27**



# FISHERMAN 27 MOTOR CRUISER



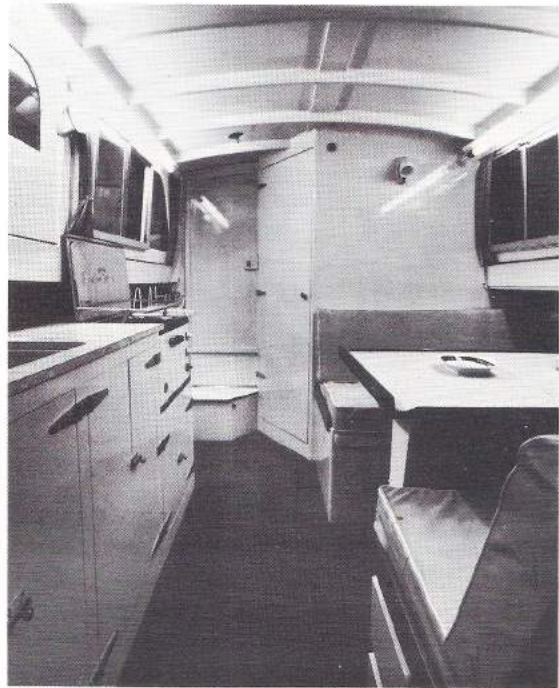
## SPECIFICATION

Length overall	27 ft. 5 in. (8.4m).
Breadth over rubber	8 ft. 9 in. (2.68m).
Draught, loaded	2 ft. 3 in. (.71m).
Weight, loaded	3 tons.
Weight, light	2½ tons.
Power, max.	30 bhp (7½ knots).
Power, cruising	24 bhp (7 knots).
Fuel capacity	43 gallons.
Consumption cruising	1¼ gallons/hr.
Endurance	30 hours.
Sail area (standard)	105 sq. ft.
Sail area (sloop rig)	190 sq. ft. (260 with Genoa).
Water capacity	30 gallons.
Ballast	1,100 lb. iron. External.
Steering	Bishops—rotating rod.
Engine controls	Single lever/gear/throttle.





Main cabin looking forward.



Main cabin looking aft.

# FISHERMAN 27

Fairey Marine's Fisherman 27 has been designed to solve the problem of the family man who wants one boat which will combine the virtues of many: separate cabins; W.C. and labour-saving galley; rugged construction; full seagoing qualities and equipment; ability to take the ground at low water on tidal moorings; sails and diesel engine; and – most of all – stacks of room. She is really a development of a type originally sponsored by the Admiralty and built in quantity by the yards on Scotland's rugged north-east coast.

The Agba hull (hot-moulded under pressure) is three-quarters of an inch thick and is bonded to the mahogany main frame. It is extremely tough and in fact a lifeboat hull of identical size and construction has been subjected to, and survived, the most stringent Ministry of Transport tests.

The Fisherman is powered by a fresh-water-cooled Perkins 4-107(M) diesel with a 2/1 reduction gear. This provides a continuous cruising speed of 6 knots, but with ample power in reserve to drive the hull at its maximum speed of about 7 knots. Space has been provided for 43 gallons of fuel and at cruising speed this will give a range of 175 miles. However if individual owners require more fuel space, provision has been made for it. The diesel engine provides reliability, safety, and above all economy. It uses only 1 gallon an hour at 2/- a gallon.

The sturdy design of the Fisherman enables her to be beached on any reasonable bottom where she sits firmly upright on her ballast keel of 1,100 lb. supported on either side by bilge keels which greatly reduce any tendency to roll in heavy weather. This ability of the Fisherman to take the ground at low water on tidal moorings is an invaluable asset when there are so few deep-water moorings within easy reach of London. Although not specifically a portable craft, with a total weight of approximately 6,000 lb. she is not too difficult to transport by road, or to ship overseas should the occasion arise.

Designed for serious motor cruising a standard Fisherman is sold complete with everything necessary for seagoing. The navigation lights comply with the Ministry of Transport requirements, she is equipped with substantial mooring warps and fenders, and has an anchor with enough cable for complete confidence at all times. The compass is provided as a standard fitting and the positive rotating rod steering system eliminates the dirty wire cables which so rapidly lose their tension





Fisherman 27 with mizzen rig.

## FAIREY'S FOR BOATS

Fairey Marine's range includes:

**SPORTS BOATS**—Swordsman (33 ft.); Huntsman (28 ft.); Huntress (23 ft.) and Cinderella (15 ft.).

**CRUISERS**—Atalanta (31 ft.); Fisherman (27 ft.); Titania (26 ft.); Atalanta (26 ft.); Fulmar (20 ft.) and Faun (16 ft. 6 in.).

**SAILING, DINGHIES**—Flying Dutchman (19 ft. 10 in.); Jollyboat (18 ft.); Falcon (16 ft. 6 in.); 5-0-5 (16 ft. 6 in.); Albacore (15 ft.); Swordfish (15 ft.); Finn (14 ft. 9 in.); International (14 ft.); Firefly (12 ft.); Duckling (9 ft.) and Dinky (7 ft. 6 in.); the last two are also rowing boats.

## HAMBLE BOAT PARK

If you own a Fairey cruiser, Fairey Marine can solve your mooring problem for you. We have set up a Boat Park within our premises at Hamble where your craft can have a shore berth throughout the year. It lives on land but can be on the water (with the whole of the Solent to explore) within 5 minutes. Fresh water, victualling, fuel, parking, maintenance and service facilities all available—plus the security of being within an enclosed area on private property.

leaving no feel to the helm. An additional attraction both in the performance and appearance of the Fisherman is the serviceable rig. Two alternative rigs are available. The mizzen and mizzen stay sail give a sail area of 105 sq. ft., which although primarily intended as steadying canvas can bring the boat home if the propeller is fouled; and a sloop rig of 190 sq. ft., which gives the Fisherman a very adequate performance under sail alone. An additional headsail is available bringing the total area up to 260 sq. ft. and giving an even better sailing performance.

For the more ambitious owner who will be cruising in distant waters, adequate provision has been made for charts and navigation instruments. Location points for special equipment such as a Hecta Echo-sounder or the Heron homer D.F. equipment, have been allowed for although these instruments are not regarded as standard fittings.

Below decks the Fisherman is spacious and practical yet designed with an eye to comfort. The forward cabin contains two full-length single berths deeply upholstered in foam and completely separable from the saloon. The saloon has over 6 ft. headroom throughout and a luxurious full-length double berth is formed by lowering the large table down flush with the seats at either side. There is a large fresh-water tank neatly concealed and racks for crockery and cutlery. Ample stowage has been allowed for in numerous lockers including two large hanging cupboards. A separate toilet with W.C. and wash-basin, and room to hang wet oilskins, are additional assets.

For shore-going, space has been allowed on the cabin top forward of the windscreen for a small dinghy, or if you prefer it, an Avon inflatable raft such as the "Red Start". Lockers in the cockpit provide space for a Seagull outboard and its can of fuel, plus the numerous other items which accumulate aboard a seagoing cruiser.

Even crockery is provided aboard the Fisherman. All that is required to put to sea is your personal bedding and a chart of your own harbour. And you can choose from a list of luxury extras obtainable for this craft, including the splendid re-circulation shower.

The Fairey Fisherman has solved the problem of a weekend flat in sheltered waters or a boat to cross the Channel in any weather in safety and comfort.



## Fairey Marine Limited

Office, Factory and Showrooms: Hamble, Hants. Tel.: Hamble 2135

A MEMBER OF THE FAIREY GROUP OF COMPANIES