

SEASON 1956



Designed by: Uffa Fox, R.D.I.

The New
26' ATALANTA MK. II

by

FAIREY MARINE LIMITED
HAMBLE · HANTS · ENGLAND

A SUBSIDIARY OF THE FAIREY AVIATION COMPANY LTD.



THREE NEW CRUISERS

DESIGNED BY

UFFA FOX, R.D.I.

Here is a cruiser that offers all the advantages of shallow draught, light weight and a self-draining cockpit with the seagoing qualities and windward ability of a keel boat.

The retractable ballast keels give stability under all conditions and can be clamped when lowered.

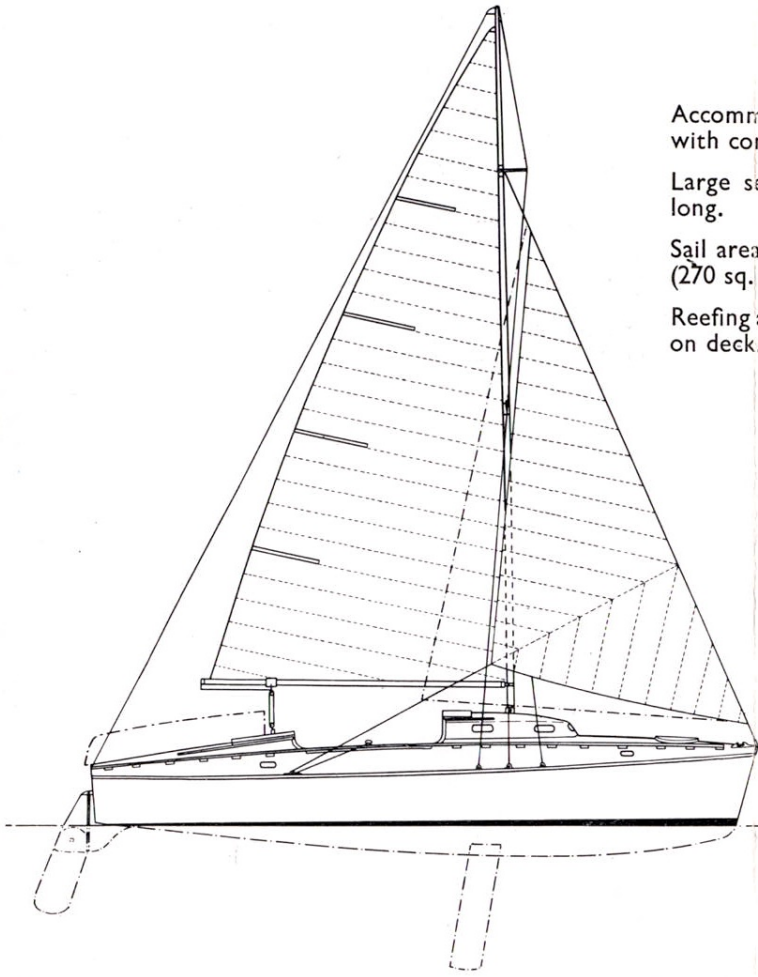
With the keels raised, the draught is only fifteen inches, and with the keels lowered five feet nine inches.

The hull and decks are hot moulded by methods developed by Fairey Marine Ltd., thus ensuring a sound, waterproof hull of great strength. Thousands of boats built by these methods have been in service for long periods in all parts of the world.

The design of these cruisers enables an inboard or outboard engine to be fitted and a dinghy to be carried on the after deck.

A prototype has been built and thoroughly tested in all conditions.

The shallow draught and light weight enables it to be easily trailed for transport and winter storage.

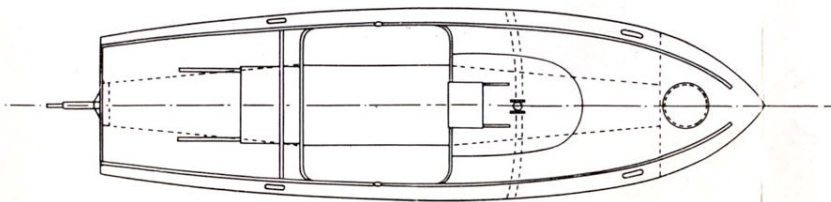
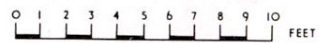
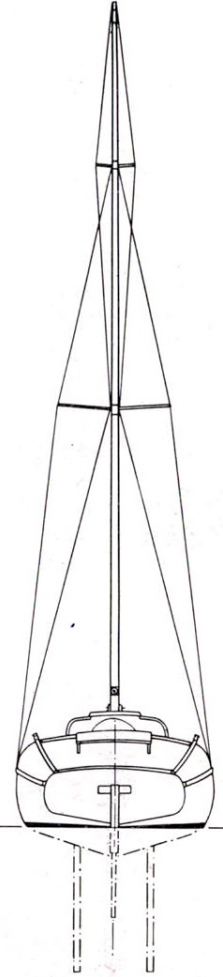


Accommodation for four or six adults with comfortable sitting headroom.

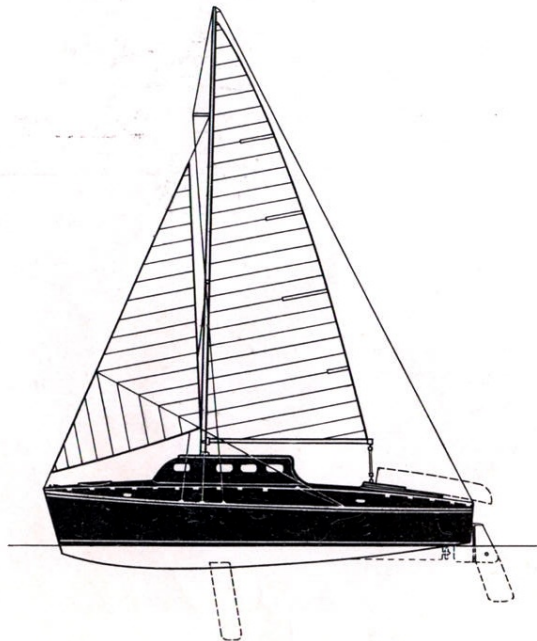
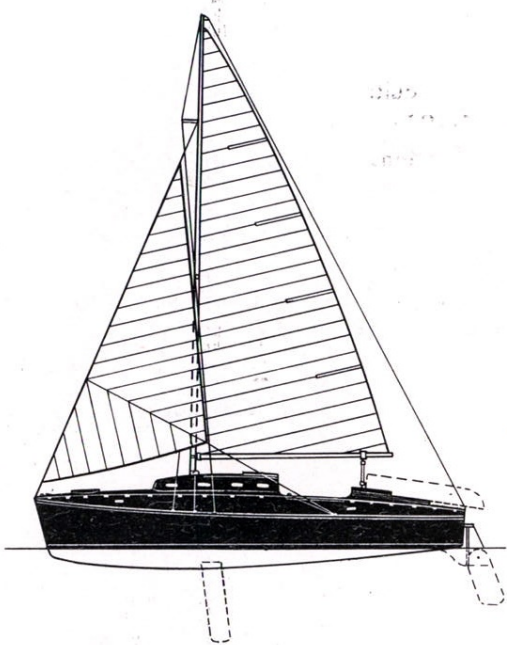
Large self-draining Cockpit 6ft. 6ins. long.

Sail area 240 sq. ft. (270 sq. ft. with Genoa).

Reefing and sail changing without going on deck.



The New
26' ATALANTA MK. II



ATALANTA MK. III

Accommodation for six adults with comfortable sitting headroom.

Self-draining Cockpit 4ft. 6ins. long.

Sail area 240 sq. ft.
(270 sq. ft. with Genoa).

ATALANTA MK. IV

Accommodation for six adults.

A Motor-sailer with good sailing qualities and 6ft. 3ins. headroom in main Cabin.

Self-draining Cockpit 4ft. 6ins. long.

Sail area 200 sq. ft.

For further particulars apply Fairey Marine Ltd., Hamble, Hants, England.

Wide range of boats and hot moulded shells available.